

What is ShellWizard (95) And What Does It Do?

ShellWizard is a program that allows you configure advance settings of Windows 95. For example, it can remove the "Shortcut to" prefix on Shortcuts. ShellWizard also includes a macro language which you can use pre-existing plugins or easily create your own.

Thanks To:

Kent Lee
Jon Jönsson
Johan Kottlinski

About ShellWizard / License Agreement

ShellWizard © 1996 Per Mellstrand. All rights reserved.

License agreement

This program is provided "as is". There is no guarantee that it will work on your computer. You are using this program at your own risk. The author assumes no responsibility and liability for any damages caused by the use of this program. When you use this program you are responsible for any damage it may cause.

ShellWizard is distributed as Shareware. This means that you are allowed to evaluate this program for 20 days. If you continue to use the program beyond the 20 day evaluation period, you must register it with the author. If continue to use this program without registering, you are using this program illegally.

The author of ShellWizard is a Swedish citizen and is not affected by any laws other those governing the International and Swedish community. The serial number you receive when you register is not guaranteed to work with any other version, though it may work with later versions of the program.

ShellWizard may not be distributed in any form other than in its entire original archive. You must not alter or disassemble any of the files present in the archive. If you do, you will be prosecuted. Distribution of ShellWizard serial numbers is strictly prohibited. If this occurs, the offending person or persons will be prosecuted to the maximum extent of the law.

By using ShellWizard you accept this agreement and will adhere to its provisions.

ShellWizard Reference: Desktop Tab



My computer

Name The name of the desktop icon "My computer".

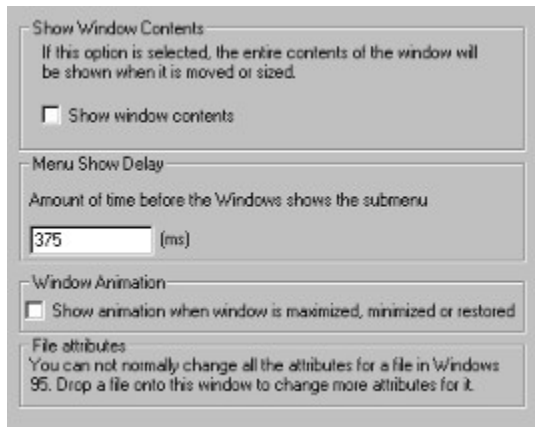
Network Neighborhood

Name The name of the desktop icon "Network Neighborhood"

Show Network Neighborhood icon on the desktop If this box is checked the Network Neighborhood icon will be visible on the desktop.

Press the  button to open help.

ShellWizard Reference: General Windows 95 UI Settings Tab



Drag full windows

Show window contents	Determines if Windows display the contents of the window or just a frame of the window when you move or size it.
----------------------	--

Menu Show Delay

Time delay	The time delay before submenus appears.
------------	---

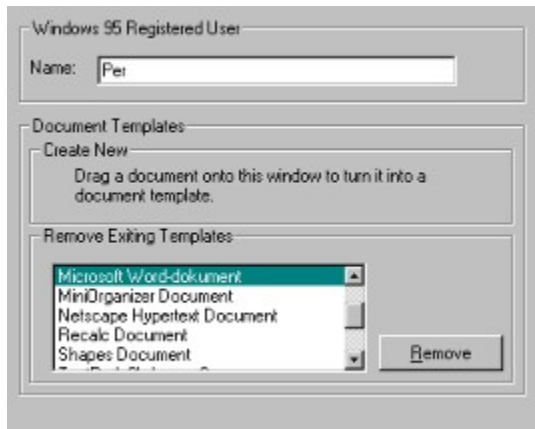
Window Animation

Show animation when window is maximized, minimized or restored.	Determines if Windows will animate a window when it is maximized, minimized or restored.
---	--

File Attributes

Drop a file from the Explorer onto this window to edit it's attributes.

ShellWizard Reference: Windows Registration Data & Document Templates



Windows 95 Registered User

Name The name that you entered during the setup of Windows 95.

Document Templates

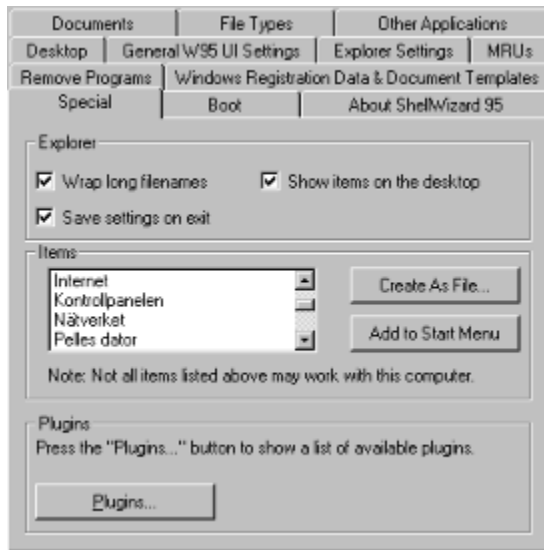
Create New

If you drag a document to this tab, it will be used as a document template. Document templates will appear in the 'New' menu of Explorer.

Remove Existing Templates

Select a document template and press remove to remove it. Any file associated with this document template will be removed.

ShellWizard Reference: Special Tab



Explorer

Warp long filenames	Determines if Explorer will warp long filenames.
Save Changes on exit	Determines if Explorer will save changes.
Show Items on the desktop	Determines if Explorer will show items on the desktop. (If you uncheck this item the desktop will be empty)

Document Templates

If you drag a document to this tab, it will be used as a document template. Document templates will appear in the 'New' menu of Explorer.

Items

Create as file	Creates the item as a file. (All items do not work properly)
Add to Start Menu	Creates the item as a file in the Start menu. (All items do not work properly)

Plugins

You can extend ShellWizard's capabilities with plugins. You can easily write plugins in a normal text editor. Please see the ShellWizard language reference for more help on plugins. New plugins may be found at the ShellWizard Web Page (<http://www.exmandato.se/~per/shellwizard/>). The button "Plugins..." shows a list of all plugins in the Windows directory.

ShellWizard Reference: Boot Tab

The screenshot shows the 'General' and 'Boot Menu' sections of the ShellWizard Boot Tab. In the 'General' section, 'Function keys available for 2 seconds' is checked, 'Show Splash Screen while loading' is unchecked, and 'Start GUI automatically' is checked. In the 'Boot Menu' section, 'Always show Boot Menu' is unchecked, and 'Choose default item after 5 seconds' is set.

Section	Option	Value / State
General	Function keys available for	2 seconds (checked)
	Show Splash Screen while loading	unchecked
	Start GUI automatically	checked
Boot Menu	Always show Boot Menu	unchecked
	Choose default item after	5 seconds

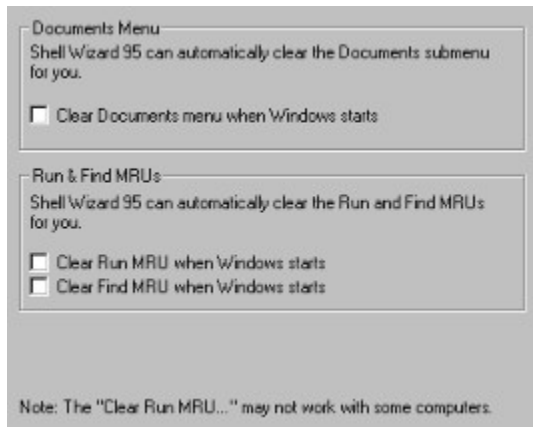
General

Function keys available	Determines whether you can interrupt the normal boot process by pressing the Functions keys. (e.g. F8)
... for x seconds	The amount of time Windows will wait before continuing to boot.
Show splash screen while loading	Selects whether Windows will display the start up screen while booting.
Start GUI automatically	Determines whether Windows will start the Graphical User Interface automatically instead of the DOS command prompt.

Boot Menu

Always show Boot Menu	Determines if Windows will always display the boot menu at start up.
Choose default item after x seconds.	If a choice is not made when the boot menu appears, Windows will chose the default item after x seconds.

ShellWizard Reference: MRUs Tab



Note: If any of the boxes on this page are checked, ShellWizard will automatically launch every time Windows is started.

Documents Menu

Clear Documents menu	Determines whether the Documents menu will automatically be emptied every time Windows is started.
----------------------	--

Run & Find MRUs

Clear Run MRU when Windows starts	Determines whether the Run MRU will automatically be emptied every time Windows is started.
Clear Find MRU when Windows starts	Determines whether the Find MRU will automatically be emptied every time Windows is started

ShellWizard Reference: Remove Programs Tab



Use this tab to remove unwanted entries from the "Add/Remove Programs" in Control Panel.

Macro Language Introduction

You can create extensions to ShellWizard called plugins. A plugin is a normal text file with the .swe extension. The Macro Language is not similar to C, Basic or any other programming language. It is a very simple and very useful language. An example is shown below.

File "example1.swe":

[General]

DisplayName=This is a simple example

DisplayName is the name that ShellWizard will display in the list of plugins.

This entry MUST exist for all plugins

LanguageVersion=1

LanguageVersion tells ShellWizard which version of the macro language this file is written.

This entry MUST exist for all plugins. Use version 1 for ShellWizard 1.0

[FileOperations]

NumberOfEntries=1

This tells ShellWizard how many file operations the plugin will execute.

[FileOperation#1]

Operation=3

Operation 3 = Create new folder. Please see the language reference for details.

Destination=c:\This_is_a_sample_folder

This tells ShellWizard where to create the folder and its name.

In this example the folder will be created in c:\ and be named This_is_a_sample_folder .

End Of File

All lines beginning with the # sign are comments. You can include them in the file if you wish but it will not affect its function.

If you want to try this example, copy the source to a file called "example1.swe" and be sure to *put it into your Windows directory* . When the list of plugins in ShellWizard is selected you should see an item called "This is a simple example". Select it and press run.

If this doesn't work please check the following:

Is the file in your Windows directory?

Does the file have the .swe extension?

If it still doesn't work send email to **per@exmandato.se**.

If example1 works and you want to try to something else, do the following:

File "example2.swe":

[general]

DisplayName=This is my second test

LanguageVersion=1

[FileOperations]

NumberOfEntries=3

[FileOperation#1]

Operation=3
Destination=c:\MyNewFolder

[FileOperation#2]
Operation=1
Operation 1 = Copy file
Source=c:\autoexec.bat
Destination=c:\MyNewFolder\autoexec.backup

[FileOperation#3]
Operation=1
Source=c:\config.sys
Destination=c:\MyNewFolder\config.backup

End Of File

This example will create a folder called "MyNewFolder" in c:\ and copy the files c:\autoexec.bat and c:\config.sys into the new folder. The files will be renamed to autoexec.backup and config.backup.

For more examples please see the "Examples" section of the ShellWizard help.

ShellWizard Macro Language Reference : Headers needed in all plugins

ShellWizard requires some entries to accept a plugin file. All these entries are located under the [General] section.

General:DisplayName

This is necessary for ShellWizard to display a name in the plugin list.

General:LanguageVersion

ShellWizard checks this entry and compares it to the version of the language it can handle. You will get an error if this entry not is present. You will also get an error from ShellWizard 1.50 if this is anything other than 1 or 2.

Example:

[General]

DisplayName=This is the name of my plugin

LanguageVersion=1

End of example

ShellWizard Macro Language Reference : Writing to the registry

Registry:NumberOfEntries

This is used to tell ShellWizard how many changes to the system registry your plugin will make.

RegistryEntry#?:Type

The type of data you are writing to the registry.

Possible values:

- 0 Write a string
- 1 Write an integer

RegistryEntry#?:Base

The base key where the data is to be stored.

Possible values:

- 0 HKEY_CLASSES_ROOT
- 1 HKEY_CURRENT_USER
- 2 HKEY_LOCAL_MACHINE

RegistryEntry#?:Path

The path of the subkey where the data will be stored.

RegistryEntry#?:Entry

The entry in the subkey where the data will be stored.

RegistryEntry#?:Data

The data to be stored.

Example1

[General]

DisplayName=Simple Registry patch 1

LanguageVersion=1

[Registry]

NumberOfEntries=1

[RegistryEntry#1]

Type=0

Base=1

Path=example\example1

Entry=Entry1

Data=Hello World

End Of Example

This example will add the subkey example\example1 to HKEY_CURRENT_USER. It will also set the value "entry1" in this subkey to "Hello world".

Example2

[General]

DisplayName=Simple Registry patch 2

LanguageVersion=1

[Registry]

NumberOfEntries=2

[RegistryEntry#1]

Type=0

Base=1

Path=example\example2

Entry=Text

Data=Hello world!

[RegistryEntry#2]

Type=1

Base=1

Path=example\example2

Entry=Integer

Data=55

End Of Example

ShellWizard Macro Language Reference : Writing to INI-Files

IniFiles:NumberOfEntries

This is used to tell ShellWizard how many changes to an INI file your plugin will make.

IniFileEntry#?:File

The path of the ini file.

IniFileEntry#?:Section

The section in the ini file.

IniFileEntry#?:Entry

The entry to be written

IniFileEntry#?:Data

The data to be written.

Example

```
[General]
DisplayName=Simple INI file patch
LanguageVersion=1
```

```
[IniFiles]
NumberOfEntries=1
```

```
[IniFileEntry#1]
File=c:\testfile.ini
Section=Test section
Entry=Entry1
Data=Hello Ini file!
```

End of Example

ShellWizard Macro Language Reference : Writing to WIN.INI

WIN.INI:NumberOfEntries

This is used to tell ShellWizard how many changes to win.ini your plugin will make.

Win.IniEntry#?:Section

The section in the ini file.

Win.IniEntry#?:Entry

The entry to be written.

Win.IniEntry#?:Data

The data to be written.

Example

```
[General]
DisplayName=Simple WIN.INI patch
LanguageVersion=1
```

```
[Win.INI]
NumberOfEntries=1
```

```
[Win.iniEntry#1]
Section=Test section
Entry=Entry1
Data=Hello Win.INI!
```

End of Example

Plugin Programmers, Read This!

This version of ShellWizard contains a test macro language. Is anyone interested in using this language? What features would you like to see added to the language? Please send email to **per@exmandato.se**

Plugins wanted

Have you developed a plugin you wish to share with other users of ShellWizard? Please visit the ShellWizard Web Page and submit your plugin! You can find ShellWizard Web Page at **<http://www.exmandato.se/~per/shellwizard/>** .

ShellWizard Macro Language Reference : File Functions

FileOperations:NumberOfEntries

This is used to tell ShellWizard how many file operations your plugin will perform.

FileOperation#?Operation

Tells what file operation to perform.

Possible values

0	Move file	
1	Copy file	
2	Delete File	
3	Create Directory	Creates a directory at destination.
4	Delete Directory	Deletes a directory at destination.

FileOperation#?:Source

The source file.

Win.IniEntry#?:Destination

The destination file.

Example (copy a file)

```
[General]
DisplayName=This will copy a file
LanguageVersion=1
```

```
[FileOperations]
NumberOfEntries=1
```

```
[FileOperation#1]
Operation=1
Source=c:\autoexec.bat
Destination=c:\autoexec.backup
```

End of Example

Example (move a file)

```
[General]
DisplayName=This will move a file
LanguageVersion=1
```

```
[FileOperations]
NumberOfEntries=1
```

```
[FileOperation#1]
Operation=0
Source=c:\autoexec.backup
```

Destination=c:\autoexec.backup2

End of Example

Example (delete a file)

[General]

DisplayName=This will delete a file

LanguageVersion=1

[FileOperations]

NumberOfEntries=1

[FileOperation#1]

Operation=2

Destination=c:\autoexec.backup

End of Example

Example (create a directory)

[General]

DisplayName=This will create a directory

LanguageVersion=1

[FileOperations]

NumberOfEntries=1

[FileOperation#1]

Operation=3

Destination=c:\example folder

End of Example

Example (delete a directory)

[General]

DisplayName=This will delete a directory

LanguageVersion=1

[FileOperations]

NumberOfEntries=1

[FileOperation#1]

Operation=4

Destination=c:\example folder

End of Example

ShellWizard Macro Language Reference : Displaying Messages

You can display messages before and after your plugin is executed. If the message is displayed before the plugin is executed, it will contain a Yes and a No button. The plugin will only be executed if the user presses the Yes button. If the message is displayed after the execution of the plugin, the dialog will contain a OK button.

Displaying messages before execution

General:DisplayStartMessage

Set this value to 1 if you want to display a start message.

General:StartMessage

The message to display.

Displaying finish messages

General:DisplayFinishMessage

Set this value to 1 if you want to display a finish message.

General:FinishMessage

The message to display.

Example (start message)

```
[General]
DisplayName=This plugin will only display a dialog
LanguageVersion=1
DisplayStartMessage=1
StartMessage=This is a sample message. Do you wish to continue?
```

End of Example

Example (finish message)

```
[General]
DisplayName=This plugin will only display a dialog
LanguageVersion=1
DisplayFinishMessage=1
FinishMessage=This is a sample message.
```

End of Example

ShellWizard Macro Language Examples : Small Backup Utility

This plugin will backup the files autoexec.bat , config.sys win.ini & system.ini to a floppy (a:\
This example will only work if your Windows directory is C:\WINDOWS.

Example

Small Backup Utility © 1996 Per Mellstrand.

#This file is a part of the ShellWizard documentation.

[General]

DisplayName=Small Backup utility

LanguageVersion=1

DisplayStartMessage=1

StartMessage=This plugin will backup some system files to A: Do you wish to continue?

DisplayFinishMessage=1

FinishMessage=Ok, all files copied.

[FileOperations]

NumberOfEntries=3

[FileOperation#1]

Operation=1

Source=c:\autoexec.bat

Destination=a:\autoexec.bat.backup

[FileOperation#2]

Operation=1

Source=c:\config.sys

Destination=a:\config.sys.backup

[FileOperation#3]

Operation=1

Source=c:\windows\win.ini

Destination=a:\win.ini.backup

[FileOperation#4]

Operation=1

Source=c:\windows\system.ini

Destination=a:\system.ini.backup

End of Example

ShellWizard Macro Language Examples : Clear Excel 7.0 MRU

This example will clear the Excel 7.0 MRU.

Example

Clear Excel 7.0 MRU © 1996 Per Mellstrand.
#This file is a part of the ShellWizard documentation.

[General]

DisplayName=Clear Excel 7.0 MRU
LanguageVersion=1
DisplayStartMessage=1
StartMessage=This plugin will clear Excel 7.0s MRU. Do you wish to continue?
DisplayFinishMessage=1
FinishMessage=Excel MRU has been cleared!

[Registry]

NumberOfEntries=4

[RegistryEntry#1]

Type=0
Base=1
Path=Software\Microsoft\Excel\7.0\Recent File List
Entry=File1
Data=

[RegistryEntry#2]

Type=0
Base=1
Path=Software\Microsoft\Excel\7.0\Recent File List
Entry=File2
Data=

[RegistryEntry#3]

Type=0
Base=1
Path=Software\Microsoft\Excel\7.0\Recent File List
Entry=File3
Data=

[RegistryEntry#4]

Type=0
Base=1
Path=Software\Microsoft\Excel\7.0\Recent File List
Entry=File4
Data=

End of Example

Definition of Shareware

So, you bought that nice shareware disk for \$5-20! And you found ShellWizard! Are you a registered user? Not really. I haven't received any money that you paid for the shareware disk. In fact, you only paid for the disk and the company's cost to put the program onto disk. ShellWizard can be downloaded from the Internet without charge but it does not mean that ShellWizard itself is free. ShellWizard is distributed as Shareware which means that you may try and evaluate this software for 20 days. After the 20 day evaluation period you must either register the program with the author or remove it from your hard disk. **If you decide to use ShellWizard, you have to register the program.**

Types of registration	Register by Email	Register by Snail Mail
Individual	\$10	\$15
Business (Limited no. of users)	\$10/User (See quantity discounts)	\$5+\$10/User (See quantity discounts)
Business (Unlimited no. of users)	\$500	\$510

Quantity discounts:

2-4	5-10	11-20	21-30	31-50	51-71
20%	30%	35%	40%	50%	55%

When you register, you will receive a serial number in which you use to register the program.

You will not receive any disks or other hardware.

The password you receive is guaranteed to only work with the version you are registering, although it may work with minor upgrades as well.

How to register:

1) Send me a letter containing the following information:

- Your name
- Type of registration (individual or company)
- How many licenses you wish to purchase
- Whether you want the registration information sent to you via email or snail mail.
Use email if possible.
- Your address
- Payment

2) Mail the letter.

Note to Scandinavian users (Yes... it's in Swedish):

Du kan även registrera ShellWizard genom att betala till mitt postgiro. (790811-2910)

OBS: De kvitton som jag får innehåller inte din email-adress! Skicka därför ett email till mig innan du registrerar dig via postgiro.

My Email Address:

Email: per@exmandato.se
or: per@exmandato.com

Snail mail:

Per Mellstrand
Tvarhands gr 14
S-39363 KALMAR
SWEDEN

ShellWizard FAQ

Q: What is ShellWizard?

A: Please see section "What is ShellWizard and What does it do?"

Q: What happens after my 20 day evaluation period expires? Will ShellWizard stop working?

A: No, ShellWizard will still function. However, the delay at the startup will be increased.

Q: Help! I get an error message telling me that I don't have the correct date.

A: The Unregistered version of ShellWizard checks your date to determine how long you have been using ShellWizard. If you receive this error message you probably have turned the date back on your computer.

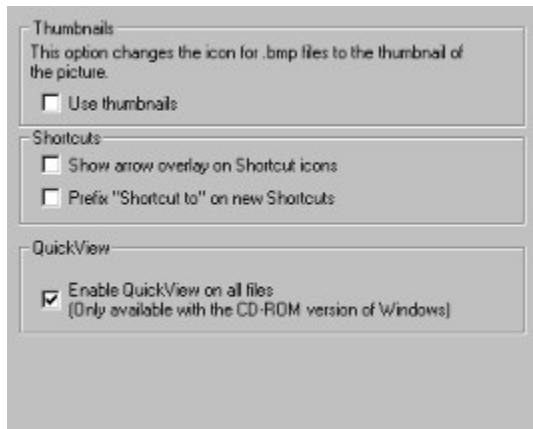
Q: Help! I have the registered version and a friend asked me to give it to him or her! What do I do?

A: Give him or her your copy of ShellWizard, but do not give out your serial number. ShellWizard will automatically unregister itself when installed on a different computer.

Q: Where can I find the latest version of ShellWizard?

A: If you have access to the Internet, the latest version of ShellWizard can be found at the following Internet Web address - **<http://www.exmandato.se/~per/shellwizard/>**

ShellWizard Reference: Explorer Settings Tab



Thumbnails

Use thumbnails If this option is selected, Windows will use a thumbnail of .bmp files as their icon.

Shortcuts

Show arrow overlay on Shortcut icons Determines if Windows will use the arrow overlay on Shortcut icons.

Prefix "Shortcut to" on new Shortcuts If this box is checked, Windows will use the prefix "Shortcut to" on all new Shortcuts created.

ShellWizard Macro Language Reference : Executing Programs

Note: The Program statement requires language version 2.

Programs:NumberOfEntries

This is used to tell ShellWizard how many programs you will execute.

Program#?:File

The file to be executed.

Program#?:Parameters

The parameters to be passed to the program.

Example

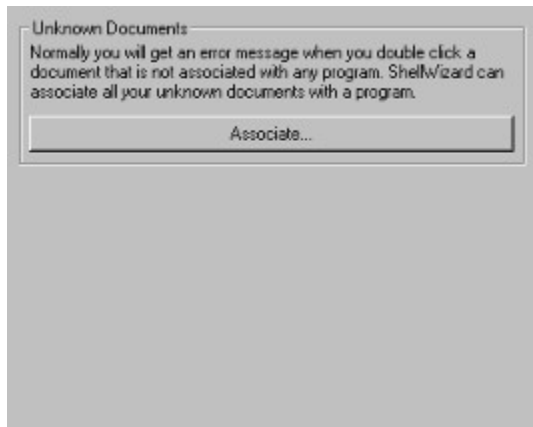
```
[General]
DisplayName=Launch Explorer
LanguageVersion=2
```

```
[Programs]
NumberOfEntries=1
```

```
[Program#1]
File=Explorer.exe
Parameters=
```

End of Example

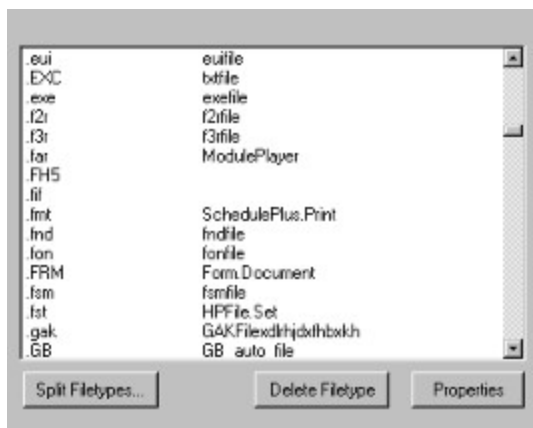
ShellWizard Reference: Documents Tab



Unknown Documents

Associate Click this button to associate a program with all unknown documents.

ShellWizard Reference: File Types Tab



Delete Filetype

Deletes the selected filetype.

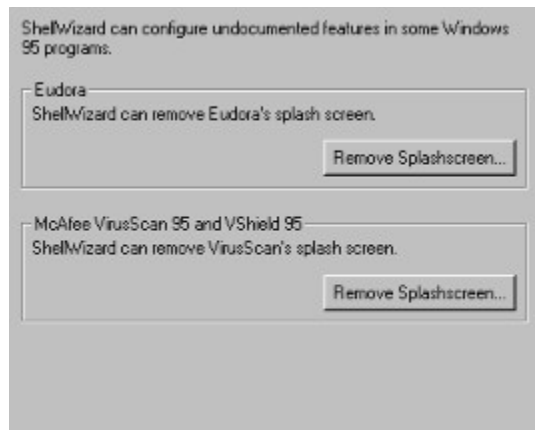
Properties

Displays the properties for the selected filetype.

Split Filetypes

This command will split one “multi” file type into several new ones. E.g. if you have both your .TXT and your .INI files this command will let you split them and configure them individually. **It’s recommended to backup your system before using this command.**

ShellWizard Reference: Other Applications Tab



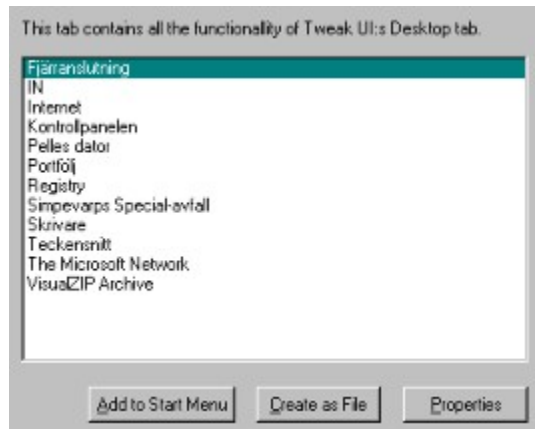
Eudora

Remove Splashscreen Removes Eudoras splashscreen

McAfee VirusScan 95 and Vshield 95

Remove Splashscreen Removes VirusScan's and Vshield's splashscreens

ShellWizard Reference: Object Tab (Sim Tweak UI)



Add to Start Menu
Create as File
Properties

Adds the selected object to the start menu
Creates the selected object as a file
Change the properties for the selected object.

